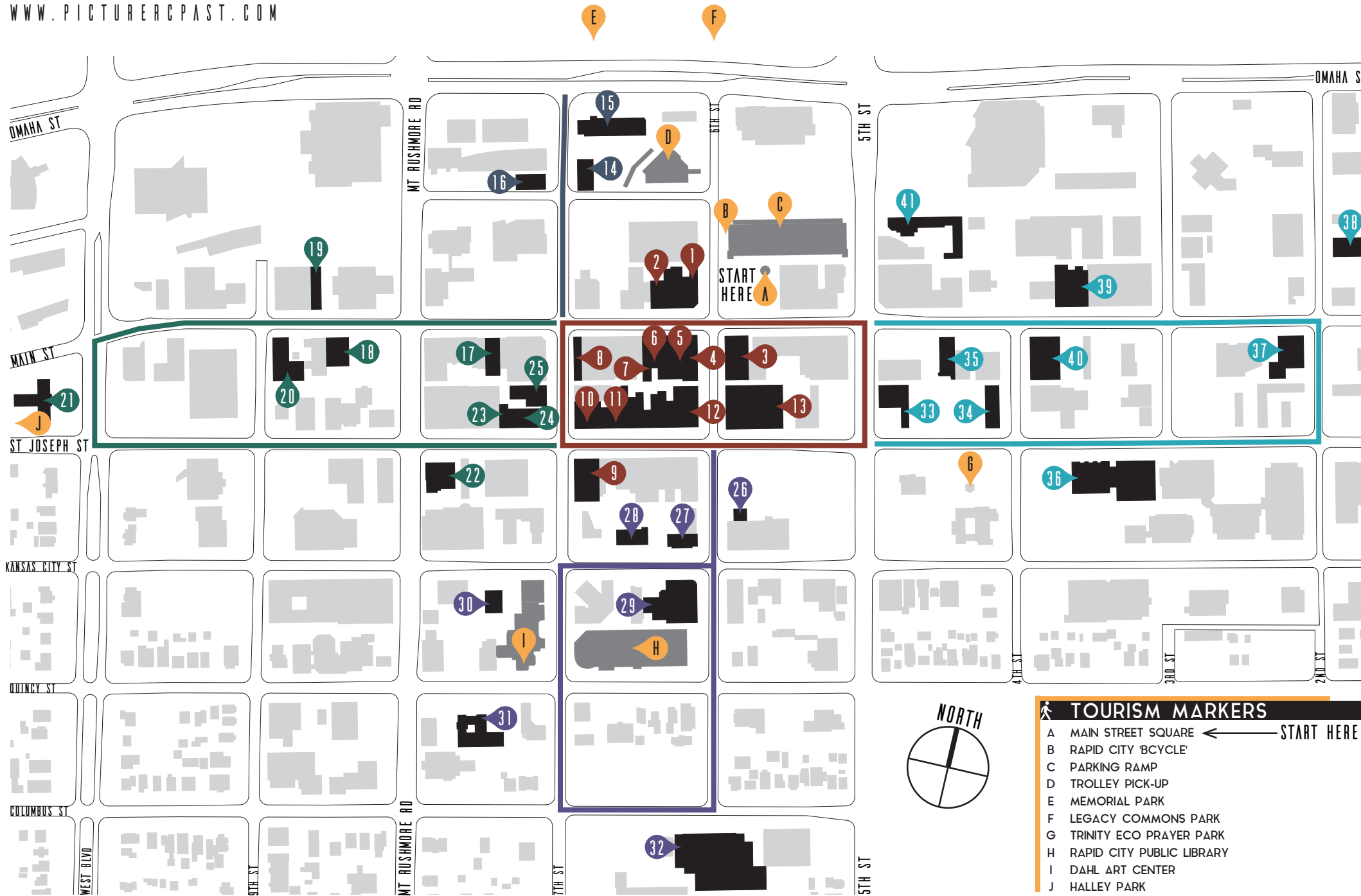




THIS WALKING TOUR TAKES YOU THROUGH THE DOWNTOWN HISTORIC DISTRICT, WHICH CONTAINS SEVERAL ARCHITECTURAL STYLES. THE MAP IS BROKEN INTO LOOPS TO ALLOW YOU TO DETERMINE THE DISTANCE OF YOUR TOUR BASED ON THE AMOUNT OF TIME YOU HAVE TO EXPLORE RAPID CITY'S DOWNTOWN.



**DOWNTOWN CORE LOOP**

- 1 CLOWER BLOCK
- 2 1915 RAPID CITY FIRE DEPARTMENT
- 3 ELKS BUILDING
- 4 PENNINGTON COUNTY BANK BUILDING
- 5 DAKOTA POWER COMPANY
- 6 613 MAIN ST
- 7 MCNAMARA BUILDING
- 8 FIRST NATIONAL BANK
- 9 WINDSOR BLOCK (629 ST. JOSEPH ST.)
- 10 BUELL BUILDING
- 11 ITALIANATE TRIO (600 BLOCK OF ST. JOSEPH ST.)
- 12 HOTEL ALEX JOHNSON
- 13 DUHAMEL BUILDING

**NORTH LOOP**

- 14 PACIFIC FRUIT & PRODUCE COMPANY WAREHOUSE
- 15 1924 CHICAGO, MILWAUKEE & ST. PAUL RAILROAD FREIGHT HOUSE
- 16 BLACK HILLS WHOLESALE GROCERY COMPANY

**WEST LOOP**

- 17 WHO'S HOBBY (HISTORIC SIGN)
- 18 BOB'S SHOE REPAIR (HISTORIC SIGN)
- 19 GAMBRILL BUILDING
- 20 RAPID CITY GARAGE (MURPHY'S)
- 21 SIOUX TRADING POST & MINNILUSA (CURRENT PARKS & REC OFFICE)
- 22 1912 FEDERAL BUILDING
- 23 ANCHOR BAR
- 24 SECURITY BUILDING
- 25 SWEENEY BUILDING

**SOUTH LOOP**

- 26 ORIGINAL CITY HALL
- 27 CARNEGIE LIBRARY
- 28 MASONIC LODGE
- 29 BLACK HILLS OLDSMOBILE & CADILLAC
- 30 FAITH TEMPLE
- 31 EMMANUEL EPISCOPAL CHURCH
- 32 RAPID CITY HIGH SCHOOL

**EAST LOOP**

- 33 SOUTH DAKOTA STOCKGROWERS ASSOCIATION
- 34 MOTOR SERVICE BUILDING
- 35 CASPER SUPPLY BUILDING
- 36 PENNINGTON COUNTY COURTHOUSE
- 37 FAIRMONT CREAMERY COMPANY
- 38 ORIGINAL PUBLIC WORKS BUILDING
- 39 RAPID CITY LAUNDRY
- 40 DEAN BUILDING
- 41 ABY'S FEED & SEED

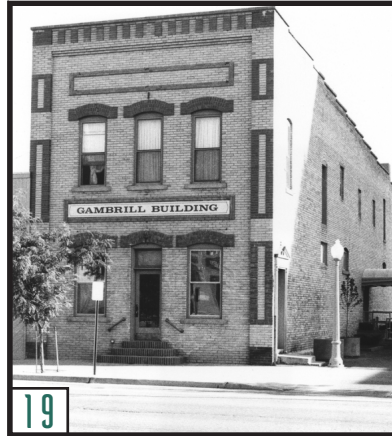
**TOURISM MARKERS**

- A MAIN STREET SQUARE ← START HERE
- B RAPID CITY 'BCYCLE'
- C PARKING RAMP
- D TROLLEY PICK-UP
- E MEMORIAL PARK
- F LEGACY COMMONS PARK
- G TRINITY ECO PRAYER PARK
- H RAPID CITY PUBLIC LIBRARY
- I DAHL ART CENTER
- J HALLEY PARK





YOU'LL NOTICE THE ORIENTATION OF RAPID CITY'S DOWNTOWN IS SLIGHTLY OFF OF TRUE NORTH. THIS IS DUE TO THE FOUNDER, JOHN BRENNAN'S COMPASS FOLLOWING THE MAGNETIC DECLINATION OF 13 DEGREES AT THE TIME THE CITY WAS PLATTED IN 1877. THE ORIGINAL CITY PLAT WAS ONE MILE SQUARE - SPANNING FROM EAST BOULEVARD TO WEST BOULEVARD AND NORTH STREET & SOUTH STREET. THE COMPASS STILL EXISTS AND CAN BE VIEWED AT THE JOURNEY MUSEUM AND LEARNING CENTER.



### DOWNTOWN CORE LOOP

THE DOWNTOWN CORE LOOP IS A SHORT TRIP THROUGH THE HISTORY OF DOWNTOWN'S ARCHITECTURE. THIS AREA CONTAINS MANY ICONIC BUILDINGS FROM RAPID CITY'S HISTORY. ONE OF THE TALLEST BUILDINGS IN TOWN IS THE HOTEL ALEX JOHNSON, LOCATED AT 523 SIXTH STREET. THE PROJECT CONSTRUCTION BEGAN IN AUGUST 1927, ONE DAY BEFORE WORK BEGAN CARVING THE GRANITE FACES OF MOUNT RUSHMORE. OTHER NOTABLE BUILDINGS INCLUDE THE BUELL BUILDING, THE DUHAMEL BUILDING, AND THE ORIGINAL 1915 RAPID CITY FIRE STATION. AT THE WEST END OF THIS LOOP IS THE FIRST NATIONAL BANK AND AT THE EAST END OF THIS LOOP IS THE MOTOR SERVICE BUILDING.

### NORTH LOOP

THE NORTH LOOP HIGHLIGHTS RAPID CITY'S EARLY RAILROAD HISTORY TAKING YOU DOWN 7TH STREET TO THE ORIGINAL 1924 CHICAGO, MILWAUKEE AND ST. PAUL RAILROAD FREIGHT HOUSE. PASSENGER DEPOTS AND WAREHOUSES WERE BUILT TRACK SIDE TO ACCOMMODATE TRAVELERS AND THE SHIPPING AND RECEIVING OF PRODUCTS. A NUMBER OF THESE WERE BUILT BY THE RAILROAD.

### EAST LOOP

THE EAST LOOP ENTERS THE EAST OF 5TH DISTRICT. NEW BUSINESSES FILL FORMERLY VACANT STOREFRONTS, BRINGING TOURISTS AND CITIZENS ALIKE INTO THE AREA. THIS WALKING LOOP INCLUDES THE HISTORIC PENNINGTON COUNTY COURTHOUSE, THE CREAMERY, AND THE RAPID CITY LAUNDRY BUILDING. THE RAPID CITY LAUNDRY WAS BUILT IN 1929 FOR COMMERCIAL LAUNDRY FUNCTION.

### WEST LOOP

THE WEST LOOP TAKES YOU WEST OF THE HISTORIC DOWNTOWN CORE PAST HISTORIC SIGNS AT WHO'S HOBBY AND BOB'S SHOE REPAIR. ON THE WEST SIDE OF MT. RUSHMORE ROAD IS THE GAMBRILL BUILDING, THE RAPID CITY GARAGE (CURRENT MURPHY'S BUILDING). AT THE FAR WEST EDGE OF THIS LOOP YOU WILL PASS THE ORIGINAL SIOUX TRADING POST AND MINNILUSA HISTORY MUSEUM, NOW HOME TO THE RAPID CITY DEPARTMENT OF PARKS AND RECREATION. THE BUILDING WAS CONSTRUCTED IN THE EARLY 1930'S BY THE WPA ON THE SITE WITH HALLEY PARK (1915). THIS IS ALSO A FORMER LOCATION OF THE 1879 'PAP' MADISON CABIN. AS YOU WALK EAST, BACK TOWARDS DOWNTOWN YOU WILL PASS THE 1912 FEDERAL BUILDING WHICH ORIGINALLY HOUSED BOTH THE FEDERAL OFFICES AND THE POST OFFICE.

### SOUTH LOOP

THE SOUTH LOOP WINDS SOUTH OF DOWNTOWN, PASSING THE ORIGINAL 1908 CITY HALL, THE 1915 CARNEGIE LIBRARY, AND 1923 RAPID CITY HIGH SCHOOL, WHICH NOW ALSO CONTAINS THE PERFORMING ARTS CENTER. DURING THE SUMMER OF 1927, PRESIDENT CALVIN COOLIDGE SPENT THREE MONTHS IN THE BLACK HILLS. THE RAPID CITY HIGH SCHOOL WAS COINED THE 'SUMMER WHITE HOUSE', MAINTAINING A LOCAL OFFICE FOR THE PRESIDENT TO CONDUCT HIS PORTION OF THE NATION'S BUSINESS. OTHER NOTABLE BUILDINGS ON THIS LOOP ARE THE FAITH TEMPLE, EMMANUEL EPISCOPAL CHURCH, AND THE ORIGINAL BLACK HILLS OLDSMOBILE & CADILLAC.

